

Business Remote Deposit Capture (RDC) Device Control Update

Device Control (DC) is an application that manages communication between your internet browser and your Business Remote Deposit Capture (RDC) check scanner when using RDC. DC is periodically updated, which requires you to take action to install these updates on your computer.

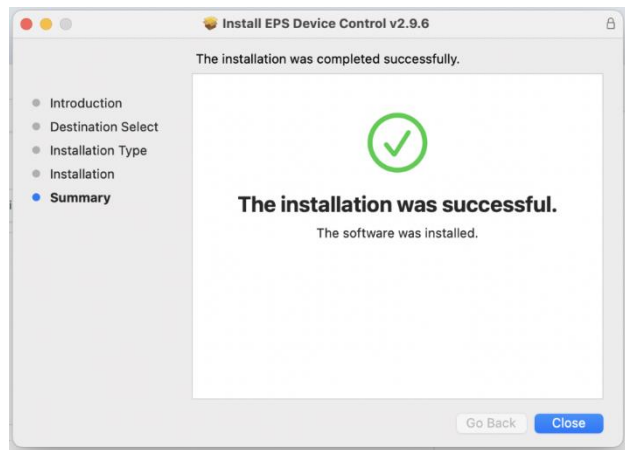
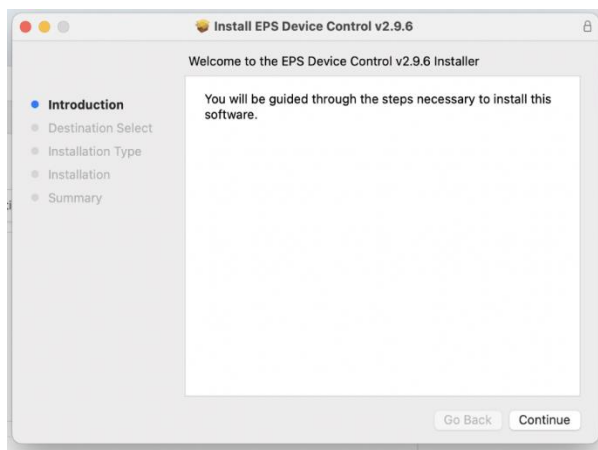
Effective July 21, 2024, DC will be updated and is required to be installed on your computer prior to your next scan for Apple Mac users.

Updating the Device Control on your Computer

Please note:

- **Apple Mac users - Admin rights will be required to install the update.**
- **Windows PC users - Admin rights will not be required to install the update.**

After July 21, 2024, the first time you attempt to scan a deposit you will be presented with an on-screen animation like the example below. You will need to update the Device Control before you can scan your items.



If you have any questions or require assistance, please contact Client Service at **617.441.7051** or clientservice@cambridgesavings.com, Monday through Friday, 8:00am - 5:30pm.